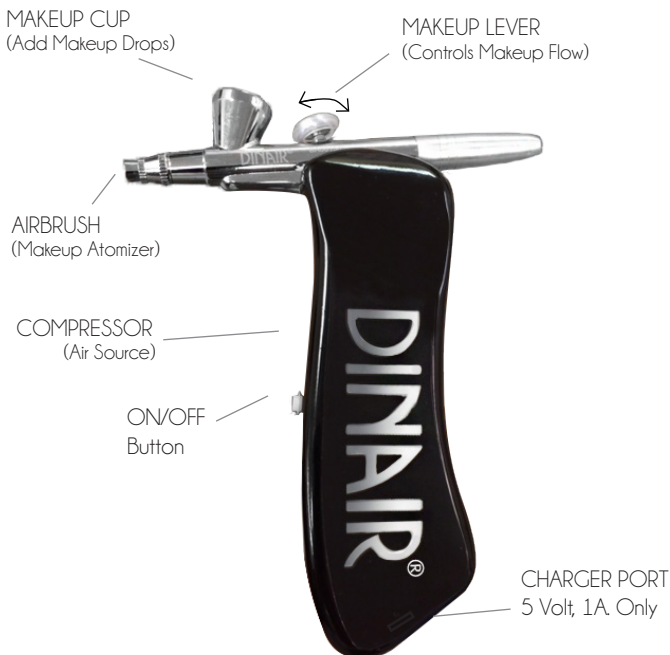




QUICK START GUIDE

Videos ► www.AirbrushMakeup.com/Howto/Dvd/

1. AirStyle™ AIRBRUSH ALL-IN-ONE



Charge for 1 hour before using.
Can run on charger, but will not charge while in use.

WARNING: Only charge with supplied AirStyle™ charger or USB port. DO NOT use Dinair 1.2 Volt Power Adapter

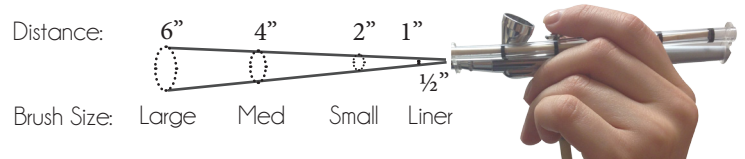
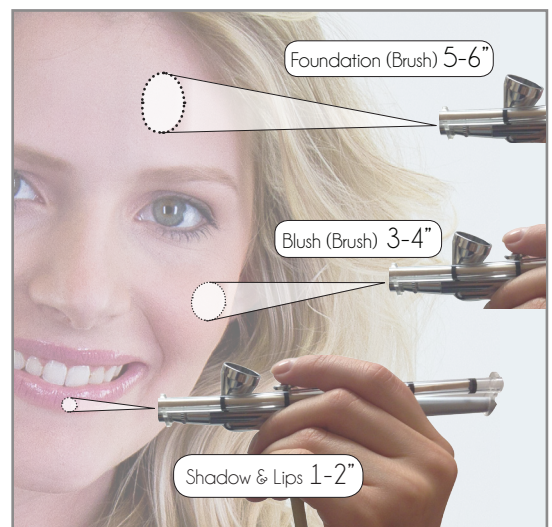
2. HAND POSITION



Hold the airbrush as you would hold a beautiful pen, with a gentle grip and fingers extended. Find a comfortable grip and place your index finger on the lever. Use your index finger to gently pull back on the lever.

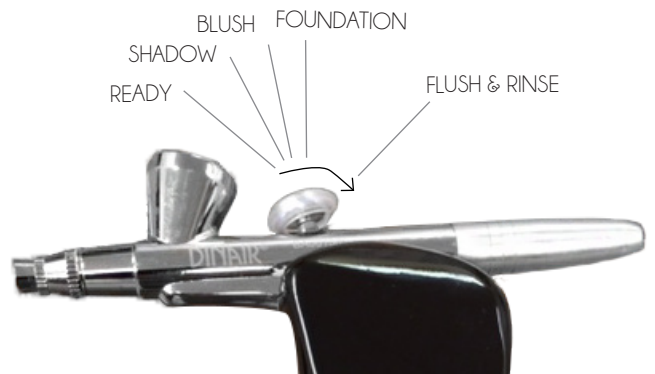
3. BRUSH SIZE FOR FOUNDATION COVERAGE

Foundation, Blush, Eye Shadow or Liner are all applied with the same Dinair Airbrush. The airbrush applicator coverage size varies with distance you hold the airbrush from the face. **Apply at the recommended distance. Do not vary distance while applying.**



4. LEVER CONTROLS MAKEUP FLOW

Each position is suggested for the optimal amount of makeup for each application type.



The Lever in the "Ready" position, Makeup off. You will feel a continuous air flow when the compressor is on. "Flush & Rinse" position is used to spray out makeup or cleaner quicker.

5. TRY WITH WATER FIRST

MISTAKES EVAPORATE WHEN PRACTICING WITH WATER!



Put a few drops of water into the makeup cup. Where you can add and mix makeup colors. It is recommended to practice with water first.

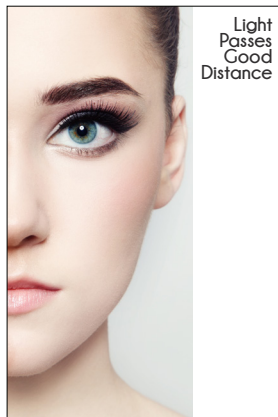
6. OPEN NOZZLE TIP SEAL - NOT THE CAP



Use a safety **pin** to make a small hole through the pour spout **safety seal**. Angle Pin towards center of bottle. Do not remove cap. Angle bottle to 90° and squeeze gently to dispense drops of makeup into the makeup Cup. 90° angle keeps top of cap clean.

7. FOUNDATION COVERAGE

1. Pick your foundation Shade
2. Put 3 drops in the Cup to start
3. Hold the airbrush like a pen, check your color on a tissue
4. Move airbrush in a circular or oval motion at 5-6" from face
5. Pull the lever back gradually, feel a light coolness of makeup
6. Watch for uneven skin tones begin to blur and blend
7. Apply lightly to whole face, add 3 drops, again. 6 to 12 drop total
8. Lightly misting face, neck and ears as skin tone becomes blended and even



Advanced

1. If blemish areas are pronounced apply **Dinair Neutralizer*** before foundation
2. For the longest lasting coverage add **Dinair Makeup Extender*** to makeup

More Info

Neutralizer - Special Coverage

- Apply before foundation to neutralize (conceal) blemishes, freckles and unwanted coloration
- Neutralizer creates an ultra thin color blocking coverage
- Neutralize first to prevent excess foundation look

Extender

- Makeup will last longer and be more water resistant
- Weddings. Travel in a tropical areas
- Oily skin, excess perspiration
- Active lifestyle and sports

8. CLEAN AND STORE



Add cleaner, circulate, cap it, soak your airbrush. To keep it clean and ready between uses.

When you are ready to use your airbrush - remove your cleaning-storage cap, start compressor and rinse out airbrush cleaner with a few drops of water.

- 1) Put lever wedge between the lever and front of the cup. Hold the lever back, in full open position.

- 2) Put 5 drops of Dinair Airbrush Cleaner in the makeup cup. Allow cleaner to circulate. Push the nose cap on.



- 3) Squeeze the nose tip until you see foam in the makeup cup. Foaming shows that cleaner has circulated. Airbrush is now ready to be capped. Always store your airbrush in caps with cleaner.

www.AirbrushMakeup.com/Shop/Airbrush_Clean/

9. AIRBRUSH SPRAYING POORLY



Add cleaner to brush and vigorously brush airbrush tip to remove stubborn dried makeup

Call or visit us online!

Dinair's Award-Winning Customer Service Team looks forward to answering your questions

M-F 8:30am-5pm, SAT 10am-2pm PST.

800.785.4770

AirbrushMakeup.com | Help@Dinair.com

Dinair Video and Tutorial Library

Learn how to airbrush makeup online!
Full Face, Hair, nails, tanning and so much more!

Explore our Online Video Library and Online Courses:
www.AirbrushMakeup.com/howto/media/face/