



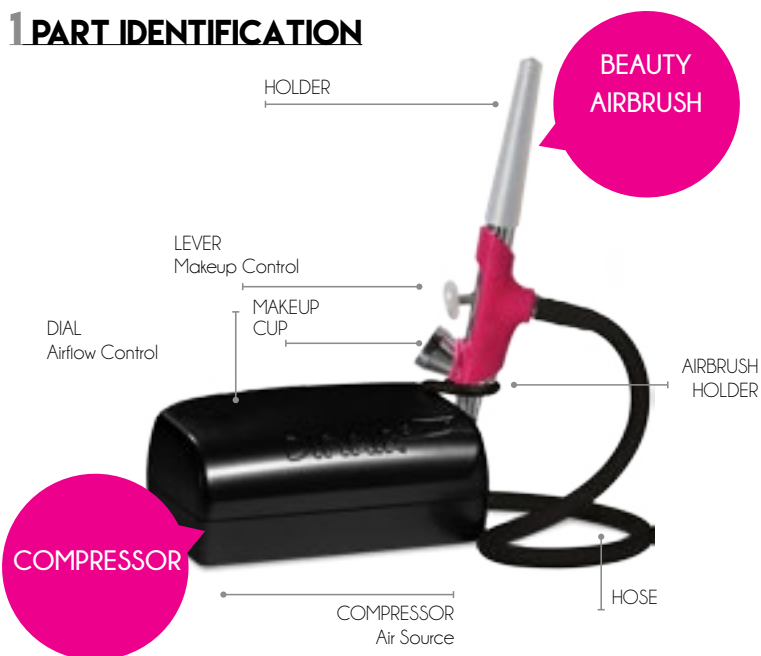
DINAIR®

QUICK START GUIDE

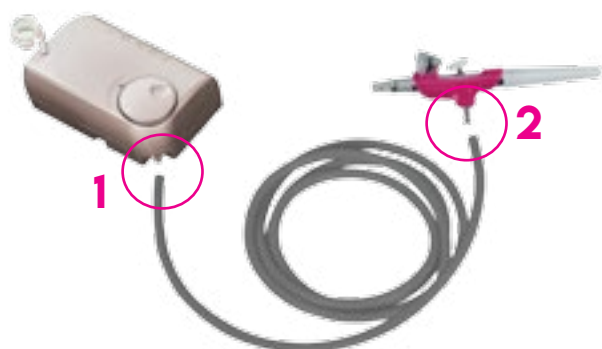
Quick Start Videos ▶

[HTTP://WWW.AIRBRUSHMAKEUP.COM/HOWTO/DVD/](http://www.airbrushmakeup.com/howto/dvd/)

1 PART IDENTIFICATION



2 KIT ASSEMBLY



Start by taking the hose and connecting one end to the side of the compressor. Next, take your airbrush and connect the other side of the hose to the bottom of it. There is no need to twist the hose, simply push it onto the bottom of the airbrush until it is securely fastened. Now the airbrush is ready!

IMPORTANT TIP
PRACTICE WITH WATER BEFORE USING MAKEUP!

3 OPENING/DISPENSING MAKEUP



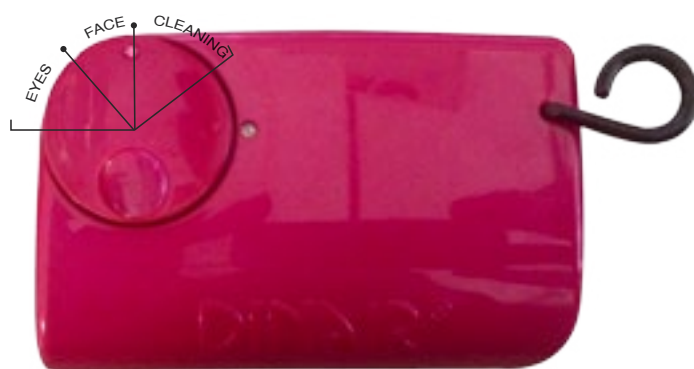
When using your bottles for the first time, do not remove the seal. Instead, use a safety pin to make a small hole in it.



Next, tip the bottle to a **90° angle**, and gently squeeze the bottle. Make sure to close the cap and return the bottle to an upright position.

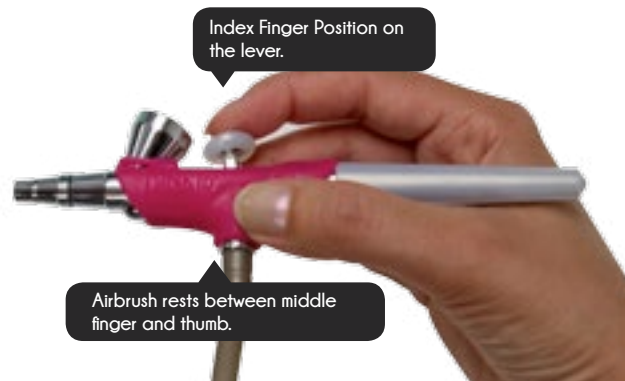
4 SETTING THE DIAL

TIP: PUSH CENTER OF DIAL TO START COMPRESSOR



For most beauty makeup applications, set the dial to 12 o'clock. Adjust as necessary following the guidelines above.

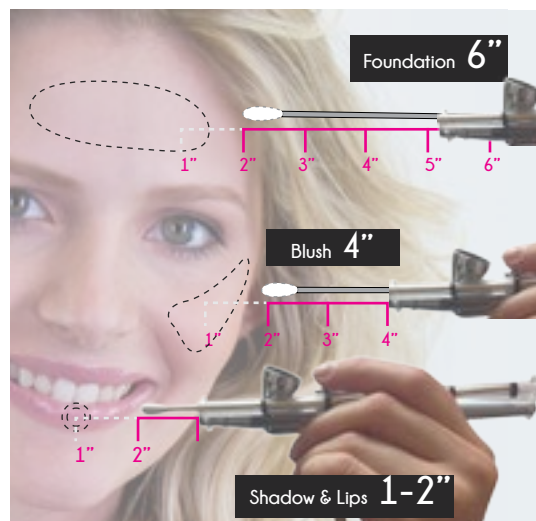
5 HAND POSITION



TIP: WRAP HOSE AROUND YOUR ARM

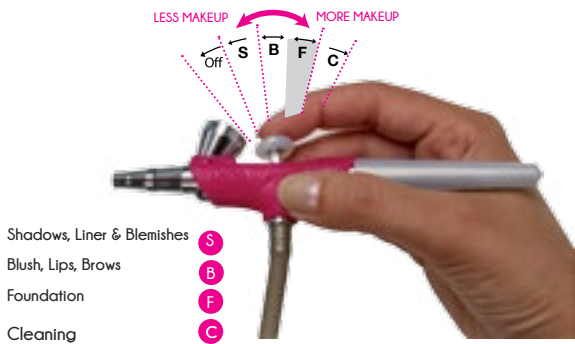
Hold the airbrush as you would hold a musical instrument, with a loose wrist and fingers extended. Find a comfortable grip and place your index finger on the lever. Use your index finger to gently pull back on the lever.

6 DISTANCE GUIDE



The Distance Guide will help you to rehearse holding the tip of the airbrush the correct distance from the face. It adjusts from about 1" out to 5".

7 MAKEUP OUTPUT CONTROL

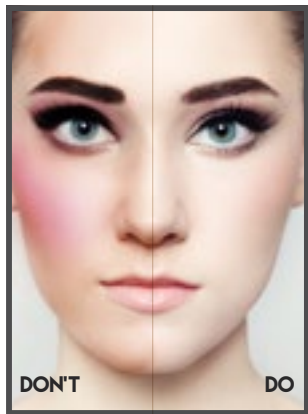


PRACTICE WITH WATER BEFORE USING MAKEUP!

Adjusting the lever regulates the release of liquid into the air stream. Practice adjusting the lever back and forth to slightly release small amounts of coverage. You get the best result when it barely feels cool against your skin.

8 APPLICATION

GENTLY apply to desired area - **IMPORTANT** - Hold the airbrush as you would hold a pen, with a loose wrist. Use your finger to gently pull back on the lever using the guide above. Apply in circular motions, **always keeping your hand in movement. Your hand should already be moving as you spray.**



The key to flawless application is distance. It's better to apply from a further distance and build coverage gradually, than to apply at a closer distance with full coverage. Remember - airbrush makeup sets on contact!

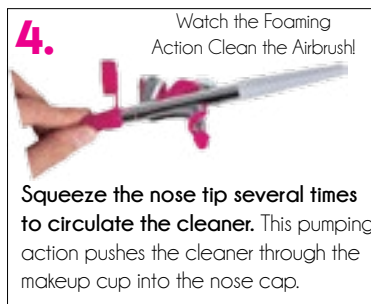
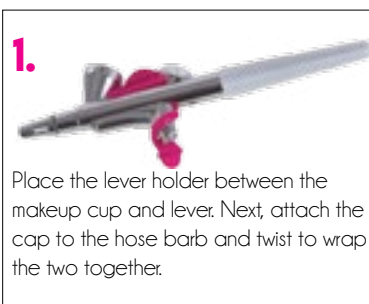
TIP: CLEAN AIRBRUSH WHILE APPLYING MAKEUP IN BETWEEN APPLICATIONS

[HTTP://WWW.AIRBRUSHMAKEUP.COM/LESSONS/COURSES/](http://www.airbrushmakeup.com/lessons/courses/)

9 CLEANING AND STORAGE

A clean airbrush is a happy airbrush! To ensure optimal airbrush performance **ALWAYS** clean and store properly using our cleaning caps. Keep your airbrushes capped when not in use to prevent or loosen dried makeup.

TIP: CLEAN AIRBRUSH WHILE APPLYING MAKEUP IN BETWEEN APPLICATIONS



[HTTP://WWW.AIRBRUSHMAKEUP.COM/SHOP/AIRBRUSH_CLEAN/](http://www.airbrushmakeup.com/shop/airbrush_clean/)

10 AIRBRUSH FAQ

Airbrush spraying incorrectly? Try these quick tips:



Add cleaner to brush and vigorously brush airbrush tip to remove stubborn dried makeup

REMINDER: ALWAYS CLEAN AIRBRUSH WHILE APPLYING MAKEUP IN BETWEEN APPLICATIONS TO PREVENT CLOGS
PRACTICE WITH WATER BEFORE USING MAKEUP!
Whether you're troubleshooting after trying the methods above, or just practicing your technique, always use water before makeup.

11 MAKEUP FAQ

If the makeup seems to go very fast, it is a pretty good guess the makeup is being applied more heavily than recommended.

How many drops are being used for foundation? _____

We generally recommend between 3 and 6 drops.

If the coverage is not full enough, filling and neutralizing can be a prep step before foundation. A small amount of prep can produce a better result and use less foundation.

[HTTP://WWW.AIRBRUSHMAKEUP.COM/MAKEUP/FOUNDATIONS/](http://www.airbrushmakeup.com/makeup/foundations/)



More Questions?

Dinair's Award-Winning Customer Service Team can answer any and all of your questions, M-F, 8AM-5PM PST.

Call or visit us online!

AIRBRUSHMAKEUP.COM | 800.785.4770 | HELP@DINAIR.COM

Need Additional Tips, Tricks & Techniques?

Learn how to airbrush ANYTHING and EVERYTHING online!
Hair, eyes, nails, and so much more!

Explore our Online Video Library and Online Courses:

[HTTP://WWW.AIRBRUSHMAKEUP.COM/HOWTO/MEDIA/FACE/](http://www.airbrushmakeup.com/howto/media/face/)

[HTTP://WWW.AIRBRUSHMAKEUP.COM/LESSONS/COURSES/](http://www.airbrushmakeup.com/lessons/courses/)